

**OneShoreline staff presentation on February 23, 2026 to the OneShoreline Board of Directors regarding an application to the CA State Parks Division of Boating and Waterways for the Pacifica Beach Boulevard Offshore Artificial Reef Study**

**Pacifica faces very significant coastal erosion challenges, including along Beach Boulevard, where sea level rise and more intense storms cause wave overtopping that threatens homes, businesses, utilities, the coastal trail, and public infrastructure, including the pier.**

**The City has been working on a Beach Boulevard Infrastructure Resiliency Project to replace existing seawalls, restore beaches, and improve public access.**

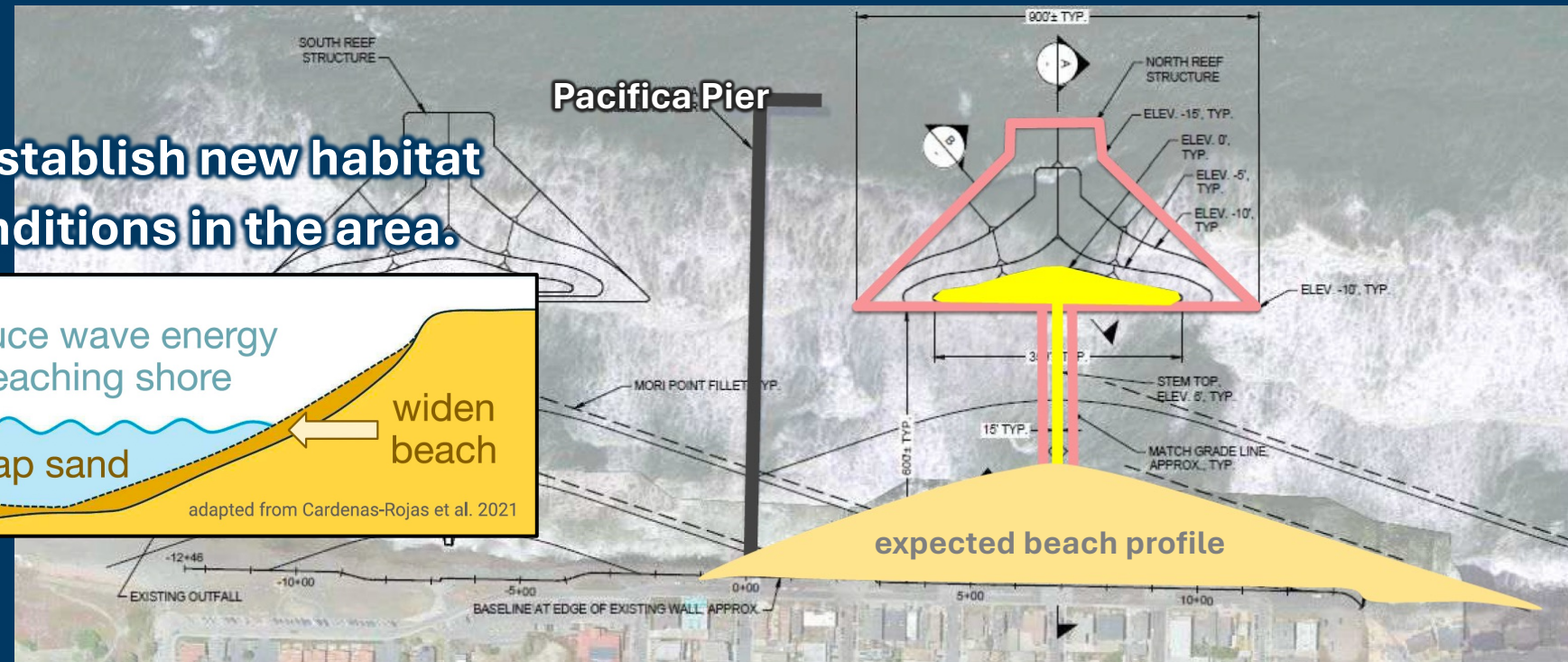
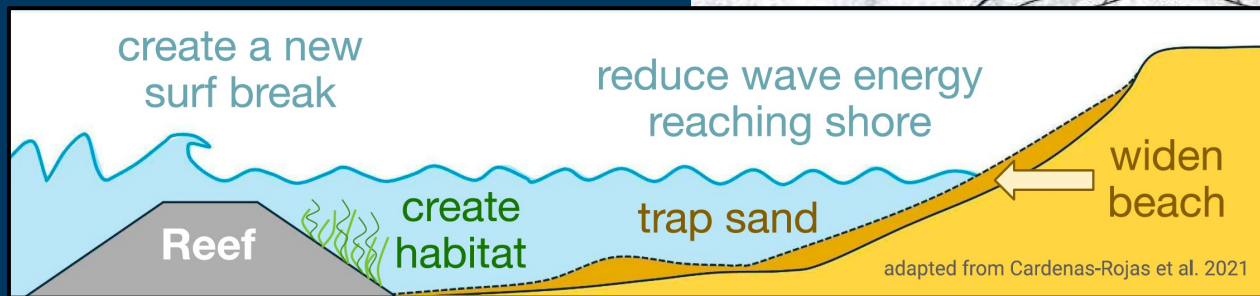


However, seawalls can lead to the loss of sand and beach, which would require the City to conduct costly beach nourishment efforts on an ongoing basis.

A group of local citizens with expertise in coastal projects has proposed that the City study creating an offshore artificial reef to dissipate wave energy, reduce erosion and retain sand on the beach, and improve surfing conditions.

Initial focus: one reef north of Pacifica Pier

The reef could help to establish new habitat and improve surfing conditions in the area.



The City of Pacifica asked OneShoreline to support this work by seeking grant funds to study it further.

On February 2<sup>nd</sup>, OneShoreline submitted a grant application to CA State Parks Division of Boating and Waterways Shoreline Erosion Control Grant Program. OneShoreline requested \$75,000, representing the maximum allowable percentage (50%) of the total project cost (\$150,000), to study the feasibility and efficacy of an offshore artificial reef north of the Pacifica Pier.

OneShoreline's key partners on the project include:

- UC Santa Cruz Center for Coastal Climate Resilience researchers will perform the technical analyses
- City of Pacifica will review the technical materials and support local community outreach



Scenic Pacifica  
Incorporated Nov. 22, 1957

---

## CITY OF PACIFICA

170 Santa Maria Avenue • Pacifica, California 94044-2506  
[www.cityofpacifica.org](http://www.cityofpacifica.org)

---

**MAYOR**  
Christine Boles

**VICE MAYOR**  
Greg Wright

**COUNCIL**  
Sue Beckmeyer  
Mary Bier  
Mayra Espinosa

February 4, 2026

Casey Caldwell, Program Lead  
California State Parks, Division of Boating and Waterways  
Coastal Erosion Control Programs

Subject: Support for OneShoreline's application to the FY27-28 Shoreline Erosion Control Program

The City Council of the City of Pacifica writes to express its strong support for the application submitted by the San Mateo County Flood and Sea Level Rise Resiliency District (OneShoreline) to the Division of Boating and Waterways' FY27-28 Shoreline Erosion Control Program. The proposed study, led by OneShoreline, would evaluate the concept-level feasibility of an offshore artificial reef as a complementary strategy to the City's Beach Boulevard Infrastructure Resiliency Project.

Pacifica continues to experience severe and worsening coastal erosion that threatens homes and businesses, public infrastructure, underground utilities, and public access along Beach Boulevard, a critical corridor for the community. Overtopping of Beach Boulevard from storm-driven wave runup is occurring with increasing frequency, placing residents, visitors, and emergency responders at risk.